

Easy-Screen Mk II

Vibratory Sieves

Manual P/N 768 628 C
– English –

Keep for Future Reference



NORDSON (UK) LTD. • STOCKPORT



Order number

P/N = Order number for Nordson products

Notice

This is a Nordson Corporation publication which is protected by copyright. Original copyright date 1998. No part of this document may be photocopied, reproduced, or translated to another language without the prior written consent of Nordson Corporation. The information contained in this publication is subject to change without notice.

Trademarks

100 Plus, Blue Box, ChromaFlex, CleanSleeve, CleanSpray, Cross-Cut, Easy Coat, Econo-Coat, Equi-Bead, Flexi-Spray, FloMelt, Flow-Manager, Flow Sentry, FoamMelt, FoamMix, Helix, Hot Shot, Hot Stitch, Isocoil, Isocore, Iso-Flo, Meltex, MicroSet, MultiScan, Nordson, OmniScan, PRX, Posi-Stop, Pro-Flo, RBX, Ready-Coat, Rhino, Select Coat, Shur-Lok, Smart Spray, System Sentry, The Melting Pot, Thread Coat, Tribomatic, UniScan, UpTime, and Versa-Spray are registered trademarks of Nordson Corporation.

AquaGuard, BetterBook, CF, CPX, CanWorks, ControlCoat, Controlled Fiberization, Easy-Feed, Easy-Screen, Excel 2000, Fibermelt, Flow-Tracker, Porous Coat, PowderGrid, PrintGuard, Pulse Spray, SCF, Select Cure, Spray Master, Sure-Bond, Ultra Pulse, Versa-Coat, Versa Screen, and Package of Values are trademarks of Nordson Corporation.

Declaration of Conformity

98/37/EC

73/23/EEC

We,

Nordson (U.K.) Limited

of

**Ashurst Drive, Cheadle Heath, Stockport, Cheshire, SK3 0RY,
United Kingdom**

declare that under our sole responsibility for supply/manufacture of the product(s)

Product Name Easy-Screen Mk II

Model Number(s) 765779, 765780, 765781, 765782, 765783 and 765784

Product Options All

to which this declaration relates, is in conformity with the following standards and other normative documents

Safety

BS EN 60204-1:1993

"Safety of Machinery – Electrical equipment of machines"

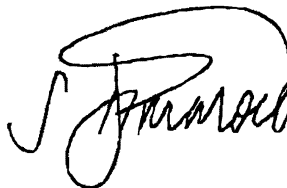
EN 60335:Part 1:1988

"Safety of household and similar electrical appliances"

BS EN 292:1991

"Safety of machinery – Basic concepts, general principles for design"

following the provisions of 98/37/EC and 73/23/EEC Directives



Steve Dimmock
Engineered Systems Manager

Nordson (U.K.) Ltd., 16 November 1998

NB ref EN45014 (BS7514)

Table of Contents

Congratulations on the Purchase of Your Nordson Product

Nordson International

Section 1 Safety

Section 2 Description

Your Safety is Important to Nordson	O-1
Manufacturer of Equipment	O-1
Europe	O-3
Distributors in Eastern & Southern Europe	O-3
Outside Europe / Hors d'Europe / Fuera de Europa	O-4
Africa / Middle East	O-4
Asia / Australia / Latin America	O-4
Japan	O-4
North America	O-4
1. Introduction	1-1
2. Qualified Personnel	1-1
3. Intended Use	1-1
4. Regulations and Approvals	1-1
5. Personal Safety	1-2
6. Fire Safety	1-3
7. Action in the Event of a Malfunction	1-4
8. Disposal	1-4
1. Intended Use	2-1
2. Features	2-2

Section 3
Installation

- 1. Transport 3-1
- 2. Unpacking 3-1
- 3. Setting Up 3-1
- 4. Removing 3-1
- 5. Storage 3-1
- 6. Disposal 3-1
- 7. Setting Up the Unit 3-2
- 8. Electrical 3-3

Section 4
Operation

- 1. Daily Operation 4-1

Section 5
Maintenance

- 1. Daily Maintenance 5-1

Section 6
Troubleshooting

- 1. Important hints for troubleshooting 6-1

Section 7
Parts

- 1. Introduction 7-1
 - Using the Illustrated Parts List 7-1
- 2. Variants 7-2
- 3. Easy-Screen Stand 7-3
- 4. Sieve Body 7-4
- 5. Parts List Sieve 450 7-5
- 6. Parts List Sieve 600 7-6

Section 8
Specifications

- 1. Electrical 8-1
- 2. Noise 8-1
- 3. Powder Input 8-1

Congratulations on the Purchase of Your Nordson Product

Nordson equipment is engineered and manufactured in accordance with strict specifications, using high quality components and state-of-the-art technologies that assure reliable, long-term performance. Your product was thoroughly tested for proper operation prior to shipment.

Before unpacking and installing your new equipment, please read this manual. It is your guide to safe installation, productive operation and effective maintenance. We recommend that you keep the manual available for future reference.

Your Safety is Important to Nordson

Carefully read the *Safety* section. Your product is designed for safe operation when used according to the published instructions. Potential hazards exist when operating instructions are not followed.

Manufacturer of Equipment

Nordson (U.K.) Ltd.
Ashurst Drive
Cheadle Heath
Stockport
England
SK3 0RY

Telephone: 0044 (0) 161-495-4200
Fax: 0044 (0) 161-428-3695

For a list of local Nordson organisations, see *Nordson International*.

Nordson International

Europe

Country		Phone	Fax
Austria		43-1-707 5521	43-1-707 5517
Belgium		31-13-511 8700	31-13-511 3995
Czech Republic		4205-4159 2411	4205-4124 4971
Denmark	<i>Hot Melt</i>	45-43-66 0123	45-43-64 1101
	<i>Finishing</i>	45-43-66 1133	45-43-66 1123
Finland		358-9-530 8080	358-9-530 80850
France		33-1-6412 1400	33-1-6412 1401
Germany	<i>Erkrath</i>	49-211-92050	49-211-254 658
	<i>Lüneburg</i>	49-4131-8940	49-4131-894 149
	<i>Düsseldorf - Nordson UV</i>	49-211-3613 169	49-211-3613 527
Italy		39-02-904 691	39-02-9078 2485
Netherlands		31-13-511 8700	31-13-511 3995
Norway	<i>Hot Melt</i>	47-23 03 6160	47-22 68 3636
	<i>Finishing</i>	47-22-65 6100	47-22-65 8858
Poland		48-22-836 4495	48-22-836 7042
Portugal		351-22-961 9400	351-22-961 9409
Russia		7-812-11 86 263	7-812-11 86 263
Slovak Republic		4205-4159 2411	4205-4124 4971
Spain		34-96-313 2090	34-96-313 2244
Sweden	<i>Hot Melt</i>	46-40-680 1700	46-40-932 882
	<i>Finishing</i>	46 (0) 303 66950	46 (0) 303 66959
Switzerland		41-61-411 3838	41-61-411 3818
United Kingdom	<i>Hot Melt</i>	44-1844-26 4500	44-1844-21 5358
	<i>Finishing</i>	44-161-495 4200	44-161-428 6716
	<i>Nordson UV</i>	44-1753-558 000	44-1753-558 100

Distributors in Eastern & Southern Europe

DED, Germany	49-211-92050	49-211-254 658
---------------------	--------------	----------------

**Outside Europe /
Hors d'Europe /
Fuera de Europa**

- For your nearest Nordson office outside Europe, contact the Nordson offices below for detailed information.
- Pour toutes informations sur représentations de Nordson dans votre pays, veuillez contacter l'un de bureaux ci-dessous.
- Para obtener la dirección de la oficina correspondiente, por favor diríjase a unas de las oficinas principales que siguen abajo.

Contact Nordson	Phone	Fax
-----------------	-------	-----

Africa / Middle East

DED, Germany	49-211-92050	49-211-254 658
--------------	--------------	----------------

Asia / Australia / Latin America

Pacific South Division, USA	1-440-988-9411	1-440-985-3710
--------------------------------	----------------	----------------

Japan

Japan	81-3-5762 2700	81-3-5762 2701
-------	----------------	----------------

North America

Canada		1-905-475 6730	1-905-475 8821
USA	Hot Melt	1-770-497 3400	1-770-497 3500
	Finishing	1-440-988 9411	1-440-985 1417
	Nordson UV	1-440-985 4592	1-440-985 4593

Section 1

Safety

Section 1

Safety

1. Introduction

Read and follow these safety instructions. Task- and equipment-specific warnings, cautions, and instructions are included in equipment documentation where appropriate.

Make sure all equipment documentation, including these instructions, is accessible to all persons operating or servicing equipment.

2. Qualified Personnel

Equipment owners are responsible for making sure that Nordson equipment is installed, operated, and serviced by qualified personnel. Qualified personnel are those employees or contractors who are trained to safely perform their assigned tasks. They are familiar with all relevant safety rules and regulations and are physically capable of performing their assigned tasks.

3. Intended Use

Use of Nordson equipment in ways other than those described in the documentation supplied with the equipment may result in injury to persons or damage to property.

Some examples of unintended use of equipment include

- using incompatible materials
- making unauthorized modifications
- removing or bypassing safety guards or interlocks
- using incompatible or damaged parts
- using unapproved auxiliary equipment
- operating equipment in excess of maximum ratings

4. Regulations and Approvals

Make sure all equipment is rated and approved for the environment in which it is used. Any approvals obtained for Nordson equipment will be voided if instructions for installation, operation, and service are not followed.

5. Personal Safety

To prevent injury follow these instructions.

- Do not operate or service equipment unless you are qualified.
- Do not operate equipment unless safety guards, doors, or covers are intact and automatic interlocks are operating properly. Do not bypass or disarm any safety devices.
- Keep clear of moving equipment. Before adjusting or servicing any moving equipment, shut off the power supply and wait until the equipment comes to a complete stop. Lock out power and secure the equipment to prevent unexpected movement.
- Relieve (bleed off) hydraulic and pneumatic pressure before adjusting or servicing pressurized systems or components. Disconnect, lock out, and tag switches before servicing electrical equipment.
- While operating manual electrostatic spray guns, make sure you are grounded. Wear electrically conductive gloves or a grounding strap connected to the gun handle or other true earth ground. Do not wear or carry metallic objects such as jewelry or tools.
- If you receive even a slight electrical shock, shut down all electrical or electrostatic equipment immediately. Do not restart the equipment until the problem has been identified and corrected.
- Obtain and read Material Safety Data Sheets (MSDS) for all materials used. Follow the manufacturer's instructions for safe handling and use of materials, and use recommended personal protection devices.
- To prevent injury, be aware of less-obvious dangers in the workplace that often cannot be completely eliminated, such as hot surfaces, sharp edges, energized electrical circuits, and moving parts that cannot be enclosed or otherwise guarded for practical reasons.

6. Fire Safety

To avoid a fire or explosion, follow these instructions.

- Ground all conductive equipment in the spray area. Check equipment and workpiece grounding devices regularly. Resistance to ground must not exceed one megohm.
- Shut down all equipment immediately if you notice static sparking or arcing. Do not restart the equipment until the cause has been identified and corrected.
- Do not smoke, weld, grind, or use open flames where flammable materials are being used or stored.
- Provide adequate ventilation to prevent dangerous concentrations of volatile materials or vapors. Refer to local codes or your material MSDS for guidance.
- Do not disconnect live electrical circuits while working with flammable materials. Shut off power at a disconnect switch first to prevent sparking.
- Know where emergency stop buttons, shutoff valves, and fire extinguishers are located. If a fire starts in a spray booth, immediately shut off the spray system and exhaust fans.
- Shut off electrostatic power and ground the charging system before adjusting, cleaning, or repairing electrostatic equipment.
- Clean, maintain, test, and repair equipment according to the instructions in your equipment documentation.
- Use only replacement parts that are designed for use with original equipment. Contact your Nordson representative for parts information and advice.

**7. *Action in the Event of a
Malfunction***

If a system or any equipment in a system malfunctions, shut off the system immediately and perform the following steps:

- Disconnect and lock out electrical power. Close pneumatic shutoff valves and relieve pressures.
- Identify the reason for the malfunction and correct it before restarting the equipment.

8. *Disposal*

Dispose of equipment and materials used in operation and servicing according to local codes.

Section 2

Description

Section 2

Description

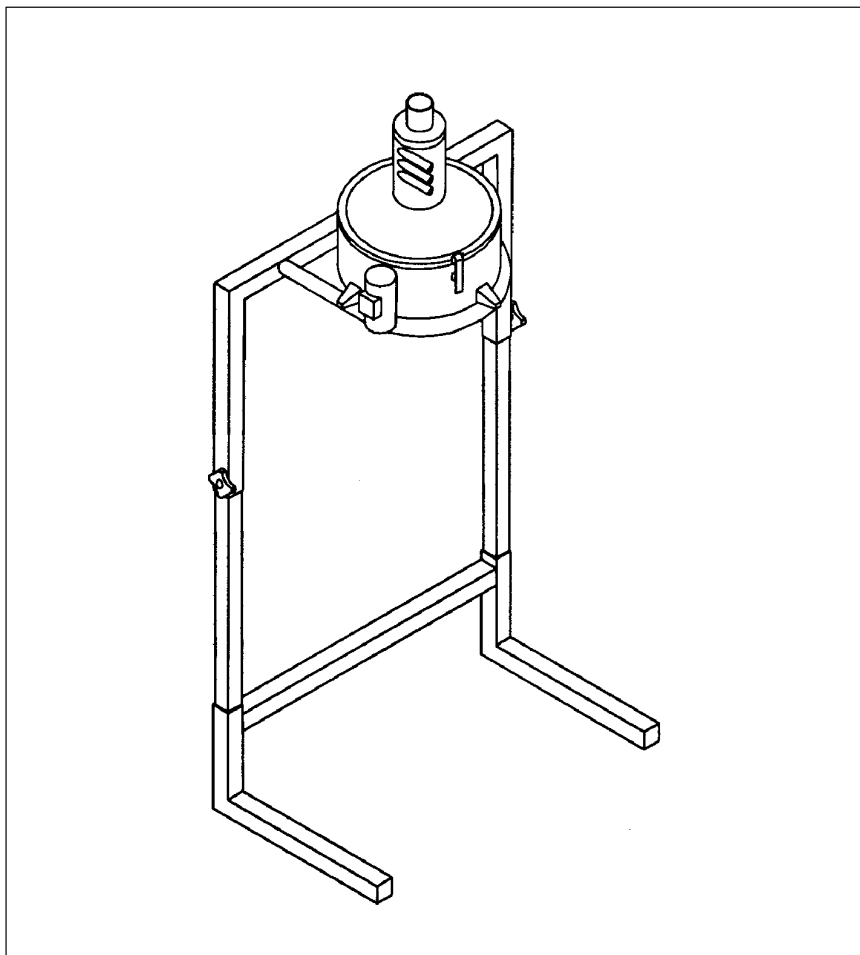


Fig. 2-1

1. *Intended Use*

The Easy-Screen Mk II is designed to sieve organic powder painting materials, accepting feeds from either virgin or recovered powder sources.

2. Features

The Easy-Screen Mk II vibratory sieve is used as part of a powder recycling system to separate powder particles by size through a screening process. Particles passing through the screen are deposited into a feed hopper for reuse.

The Easy-Screen Mk II range comprises two sizes, 450mm and 600mm diameter, the features that are to be found throughout the range are:
Quick and Easy Colour Change

- Compatible with all types of applications and recovery systems.
- Available in either free-standing form or for mounting on existing equipment.
- Smooth powder coated interior to minimise maintenance and cleaning.
- Electric vibrator reducing power consumption and noise level.
- Simple and rugged design.

Recycled powder is separated from the transport air by a mini-cyclone that vents into the extract system. Recovered powder falls onto a removable pre-tensioned vibrating screen. The conditioned powder is returned to the fluidised hopper from which the guns are fed.

Virgin powder may be introduced, blended and sieved by using a second inlet on the mini-cyclone.

Section 3

Installation

Section 3

Installation



WARNING: Allow only qualified personnel to perform the following tasks. Observe and follow the safety instructions in this document and all other related documentation.

1. Transport

Transport the unit so as to avoid damage. Do not throw the unit. Use suitable packaging materials and sturdy cartons. See *Specifications* section for weight.

Protect the unit from exposure to humidity, dust and vibrations.

2. Unpacking

Carefully unpack the unit to avoid damaging it. Check for damage caused during transport.

Save packing materials for possible later use. Otherwise recycle or dispose of properly according to local regulations.

3. Setting Up

Protect the unit from humidity, excessive dust and vibrations.

For dimensions see *Specifications* section.

4. Removing

Switch off the mains supply, then disconnect all electrical connections from the unit.

5. Storage

Pack the unit in suitable packing materials and sturdy cartons. Protect from humidity, dust and large temperature fluctuations (condensation).

6. Disposal

Dispose of properly according to local regulations.

7. Setting Up the Unit



WARNING: Allow only qualified personnel to perform the installation. Observe safety instructions.

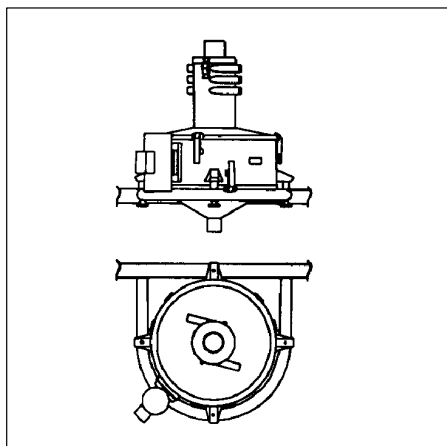


Fig. 3-1

1. For floor mounted units place the stand on a good level floor. Wall mounted units should be fixed using suitable fasteners, ensuring that the sieve will be level when installed.
2. Place the sieve body onto the stand; ensure that the vibrator is located according to Figure for 450 and 600 mm diameter sieves, passing the studs through the holes in the stand.
3. Secure the sieve to the stand with star knob fixings.
4. Place the powder hopper underneath the outlet of the sieve and connect a piece of sleeving between the outlet and inlet. Ensure that the sleeve is open for free powder flow.

NOTE: Keep vent hose lengths as short as practical, and ensure the hose does not sag to avoid powder settling. Vent hoses should be connected into a recovery system at a point where the system is under negative pressure, not exceeding 0.5 kPa (2" W.G.).

5. Connect a vent hose from the top of the cyclone to the powder recovery system.
6. Fit vent hose between the hopper and the powder recovery system.
7. Powder feeds from the recovery system connect to the mini-cyclone, fit the transfer hose(s) to the inlets of the cyclone and secure with the clips provided. Ensure all unused inlets are fitted with the blanking caps provided.

8. Electrical



WARNING: Allow only qualified personnel to perform electrical connections. Observe the safety instructions.

The main supply cable for the Easy-Screen Mk II should be connected to a disconnect switch, of a size suitable for the motor fitted. Connect the wires according to the following table.

Cable identifier	Connect to
1	L1
2	L2
3	L3
Green/Yellow	Earth

The electrical supply for the Easy-Screen Mk II should be interlocked with the powder recovery system such that the sieve can only operate when the powder recovery system is operational.

Section 4

Operation

Section 4 Operation



WARNING: Allow only qualified personnel to perform the following tasks. Observe and follow the safety instructions in this document and all other related documentation.

1. Daily Operation

1. Energise the sieve vibrator motor by switching on the supply, ensure that the sieve is vibrating.
2. The vibrator will be set to minimum vibration when delivered to the customer, to reset to a higher vibration rate remove the end covers from the vibrator and move weight's till required vibration is achieved.
3. Transfer powder into the cyclone, refer to the manufacturers manual for information on setting up the powder transfer system.
4. When adding virgin powder to the system the ration of virgin powder to recycled powder can be adjusted by controlling the amount of powder derived from each source.
5. To switch off the sieve, first turn off the powder transfer systems and then switch off the supply to the vibrator motor.

NOTE: Recycle control system to be designed for maximum of 2 transfer pumps (max. 3 bar) feeding powder into sieve at any one time. Exceeding recommended number could result in over pressurisation of sieve and reduce sieving performance.

Section 5

Maintenance

Section 5

Maintenance



WARNING: Allow only qualified personnel to perform the following tasks. Observe and follow the safety instructions in this document and all other related documentation.



WARNING: Breathing in certain airborne dusts (including finishing powders) may be hazardous to health. Ask the powder manufacturer for a Material Safety Data Sheet (MSDS) for information. Use appropriate respiratory protection.

1. Daily Maintenance

NOTE: When maintaining or cleaning the sieve ensure that the screen mesh does not become damaged. If the screen mesh shows signs of damage replace immediately.

- At intervals depending on volume of powder used but not less than once per eight hour shift, inspect the sieve screen for damage, remove any build up of material that does not pass through the sieve by either a vacuum cleaner, or by disassembly of the sieve and cleaning the screen with low pressure compressed air.
- Once per eight-hour shift, disassemble the sieve and cyclone, clean each item removing any excess powder, wipe with a lint free cloth and then reassemble as detailed below.
- Place the sieve screen on to the sieve body, then fit the sieve base. Clamp the base with the toggle clamps, ensuring that the screen is between the base and the body.

1. Daily Maintenance *(contd.)*

- Fit the sieve lid to the body. Clamp the lid with the toggle clamps.



CAUTION: It is only necessary to exert sufficient pressure with the clamps to hold the sieve lid and base in place. The clamp adjusting screw inside the toggle adjusts the tension of the clamp. Ensure that the tension is set to avoid distorting the lid or base.

- Inspect seals for damage and replace as necessary.
- Check vent hoses for blockages, clean and refit.
- Check all external cables and hoses for damage, replace or repair as necessary.

Troubleshooting

Section 6

Troubleshooting



WARNING: Allow only qualified personnel to perform the following tasks. Observe and follow the safety instructions in this document and all other related documentation.

1. Important hints for troubleshooting

The following tables provide general information for the troubleshooting of basic problems. Sometimes more detailed information, circuit diagrams or measuring devices are also needed for troubleshooting.

It must be noted that a fault can occur for several reasons. It is advisable to check all possible causes for a given fault. Obvious causes of malfunction such as broken wires, missing fasteners etc., should be noted during visual inspections and corrected immediately.

The Unit does not contain any user serviceable parts, any parts that fail must be replaced by approved parts available from Nordson.

Problem	Possible Cause	Corrective Action
Vibrator fails to run	No input power	Check power supply
	Vibrator failed	Check cable Replace vibrator
Powder builds up on sieve mesh	Mesh not cleaned at frequent enough intervals	Clean mesh at more frequent intervals
	Mesh size too small for powder	Increase mesh size
	Rate of powder supply too high	Reduce rate of powder supply
Powder in hopper contaminated	Sieve mesh damaged	Replace sieve mesh
	Sieve mesh not thoroughly cleaned before refitting	Ensure mesh is clean and is inserted with same face uppermost
		Check and re-tighten fixings
Excessive sieve noise in operation	Lid or base insecure	Check and re-tighten fixings
Powder leaks from lid or base	Seals damaged	Replace seals
	Lid clamps too tight, lid distorted	Reduce tension on clamps and replace lid seal

Section 7

Parts

Section 7

Parts

1. Introduction

To order parts, call the Nordson Customer Service Center or your local Nordson representative. Use this five-column parts list, and the accompanying illustration, to describe and locate parts correctly.

Using the Illustrated Parts List

Numbers in the Item column correspond to numbers that identify parts in illustrations following each parts list. The code NS (not shown) indicates that a listed part is not illustrated. A dash (—) is used when the part number applies to all parts in the illustration.

The six-digit number in the Part column is the Nordson Corporation part number. A series of dashes in this column (- - - - -) means the part cannot be ordered separately.

The Description column gives the part name, as well as its dimensions and other characteristics when appropriate. Indentions show the relationships between assemblies, subassemblies, and parts.

Item	P/N	Description	Quantity	Note
—	000 000	Assembly	1	A
1	000 000	• Subassembly	2	
2	000 000	• • Part	1	

- If you order the assembly, items 1 and 2 will be included.
- If you order item 1, item 2 will be included.
- If you order item 2, you will receive item 2 only.

The number in the Quantity column is the quantity required per unit, assembly, or subassembly. The code AR (As Required) is used if the part number is a bulk item ordered in quantities or if the quantity per assembly depends on the product version or model.

Letters in the Note column refer to notes at the end of each parts list. Notes contain important information about usage and ordering. Special attention should be given to notes.

2. **Variants**

Variants of the Easy-Screen are available, each is based around the same basic assembly, the following lists show the variants available and the parts lists shown on the following pages detail each variants component breakdown.

Sieve diameter and outlet size	Ø 450, 50 mm outlet
	Ø 450, 100 mm outlet
	Ø 600, 100 mm outlet
Vibrator motor size	Ø 450, three phase
	Ø 600, three phase
Sieve meshes	500 micron (supplied – standard)
	245 and 300 micron available on request

3. Easy-Screen Stand

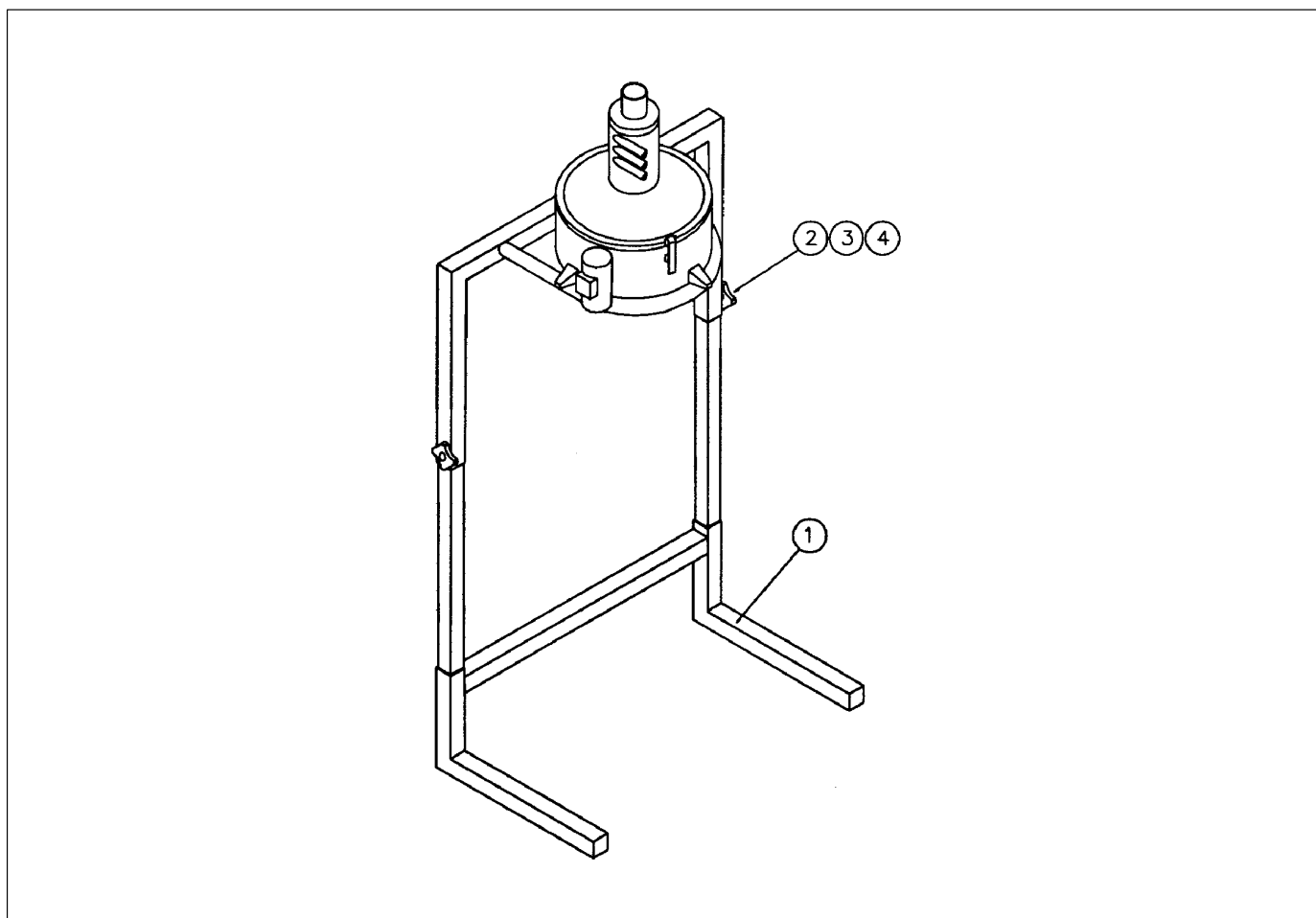


Fig. 7-1

Item	P/N	Description	Quantity
1	765 796	Stand Assembly 450	1
–	765 797	Stand Assembly 600	1
2	769 509	M10 Starknob	2
3	769 751	M10 x 50 Hex Hd Bolt	2
4	–	M10 Plain Washer	2

4. Sieve Body

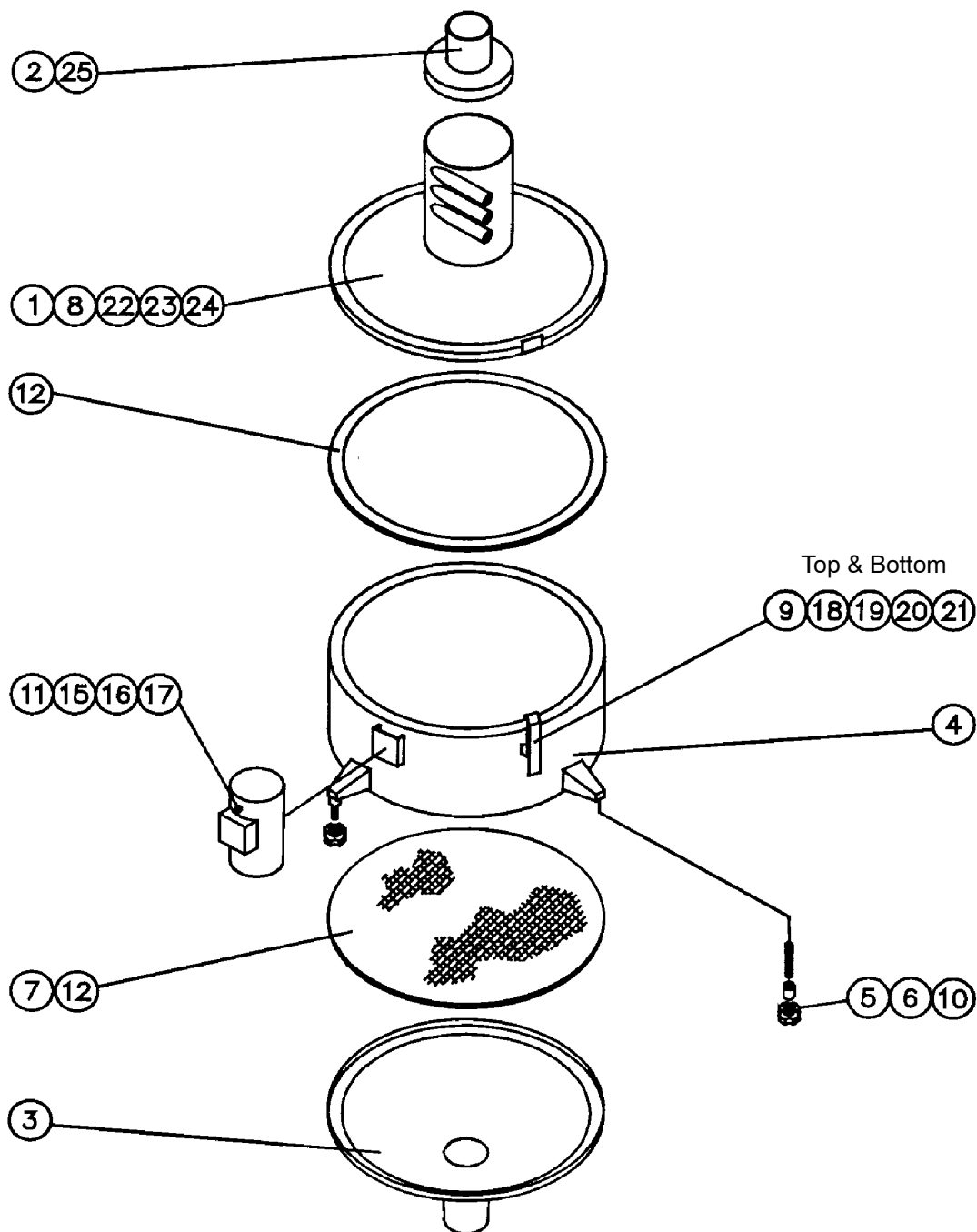


Fig. 7-2

5. Parts List Sieve 450

Item	P/N	Description	Quantity
–	765 780	Easy-Screen Mk II 450 6 Inlet Ports 2"	1
–	765 782	Easy-Screen Mk II 450 6 Inlet Ports 4"	1
1	765 788	Sieve Lid (6 Inlet Ports)	1
2	765 798	Cyclone Lid	1
3	765 791	Sieve Base 50 mm O/D	1
–	765 792	Sieve Base 100 mm O/D	1
4	765 794	Sieve Body	1
5	765 749	A.V. Mount	4
6	765 750	A.V. Stud	4
7	765 763	Sieve Screen	1
8	765 741	Overcentre Fastener	2
9	765 740	Overcentre Fastener	6
10	769 510	M6 Starknob	4
11	765 765	Electric Vibrator	1
12	765 785	Gasket 450 O/D x 400 I/D x 3Thk	3
13	765 752	Sleeve – 4"	1
14	765 751	Sleeve – 2"	1
15	769 670	M8 x 30 Lg Hex Hd Bolt	4
16	769 443	M8 Spring Washer	4
17	769 442	M8 Plain Washer	4
18	769 613	M4 x 8 Lg C'sk Hd Screw	12
19	769 611	M4 x 6 Lg C'sk Hd Screw	6
20	769 413	M4 Spring Washer	12
21	769 410	M4 Hex Nut	18
22	–	M3 x 12 Lg Hex Hd Screw	4
23	767 334	PVC Caps	3/6
24	769 401	M3 Nyloc Nut	4
25	769 519	Lid Gasket (Cyclone)	1
26	765 755	Box, Packing	–

6. Parts List Sieve 600

Item	P/N	Description	Quantity
–	765 784	Easy-Screen Mk II 600 6 Inlet Ports 4"	1
1	765 790	Sieve Lid (6 Inlet Ports)	1
2	765 798	Cyclone Lid	1
3	765 793	Sieve Base 100 mm O/D	1
4	765 795	Sieve Body	1
5	765 749	A.V. Mount	4
6	765 750	A.V. Stud	4
7	765 764	Sieve Screen	1
8	765 741	Overcentre Fastener	2
9	765 740	Overcentre Fastener	8
10	769 510	M6 Starknob	4
11	765 765	Electric Vibrator	1
12	765 786	Gasket 600 O/D x 400 I/D x 3Thk	3
13	765 752	Sleeve – 4"	1
14	–	–	–
15	769 670	M8 x 30 Lg Hex Hd Bolt	4
16	769 443	M8 Spring Washer	4
17	769 442	M8 Plain Washer	4
18	769 613	M4 x 8 Lg C'sk Hd Screw	16
19	769 611	M4 x 6 Lg C'sk Hd Screw	8
20	769 413	M4 Spring Washer	16
21	769 410	M4 Hex Nut	24
22	–	M3 x 12 Lg Hex Hd Screw	4
23	767 334	PVC Caps	3/6
24	769 401	M3 Nyloc Nut	4
25	769 519	Lid Gasket (Cyclone)	1
26	765 756	Box, Packing	–

Specifications

Section 8 Specifications

1. *Electrical*

Sieve Diameter (mm)	450	600
Voltage (Vac)	415	415
Frequency (Hz)	50	50
Power (W)	150	150
Current (A)	0.35	0.35

2. *Noise*

Sieve Diameter (mm)	450	600
Noise dBA	70	71

Measured at a distance of 1m from the surface of the unit and at a height of 1.6 m.

3. *Powder Input*

Maximum powder inlets to be utilised at any one time, not to exceed two.

